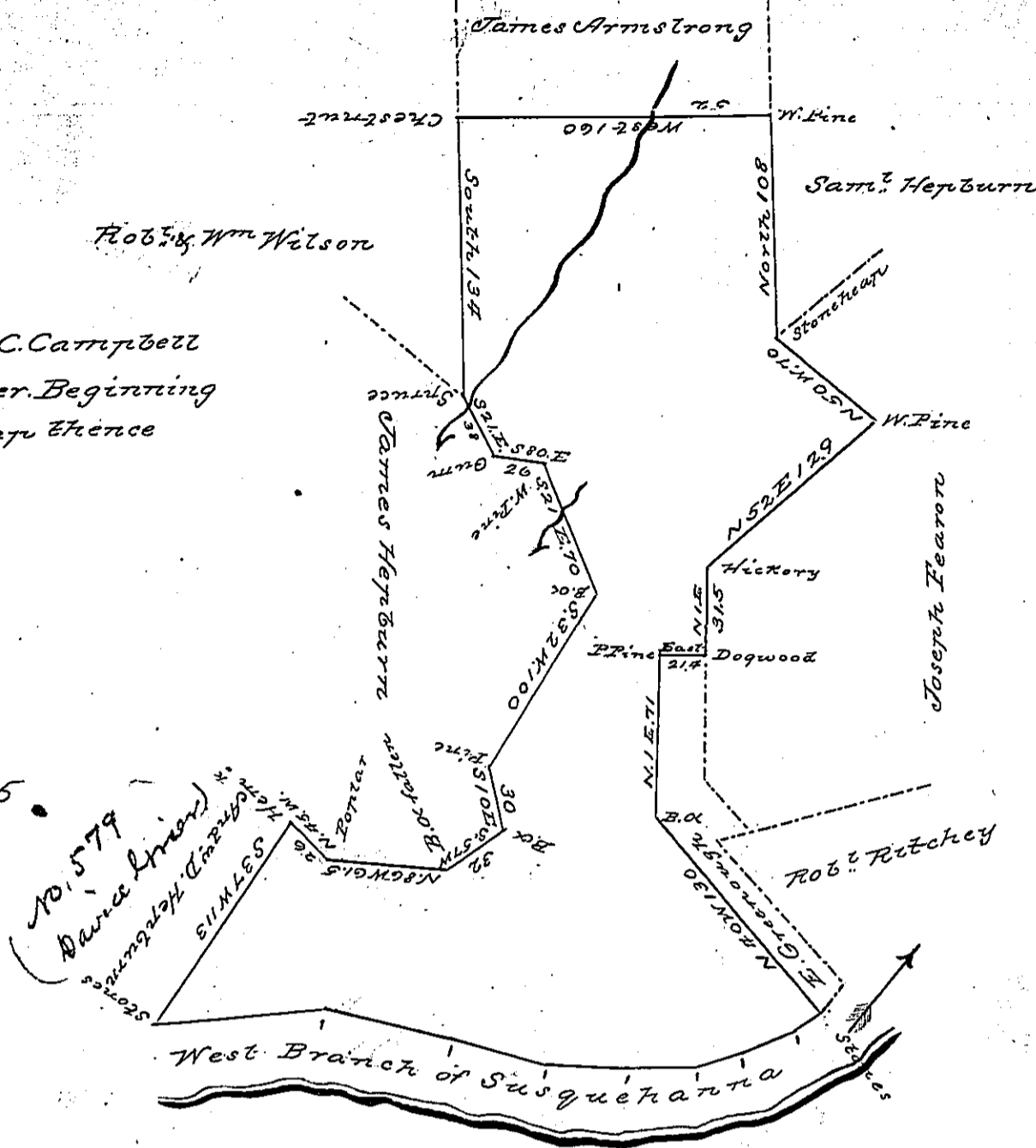


Courses of F.C. Campbell
down the River Beginning
at a stone heap fence

- N. 87 E. 86
- S. 75 E 70
- S. 76 E 38
- S. 85 E 44
- N. 88 E 33
- N. 75 E 18
- N. 69 E 30
- N. 52 E 22.5



Situate in Dunstable Township Lycoming County.
 Resurveyed on the 25th day of October 1833, by vir-
 tue of an Order of the board of property, granted
 to E. Greenough Samuel Hepburn & James Hepburn,
 on the 2nd day of October 1833, on a warrant to
 Francis C. Campbell bearing date on the 10th day of
 July 1829. Containing three hundred & ninety nine
 acres & one hundred and fifty two perches & the
 usual allowance of Six Per Cent &c.

To Jacob Spangler Esq. }
 Surveyor General } David Hanna D. S.

IN TESTIMONY that the above is a copy of the original remaining on file in the
 Department of Internal Affairs of Pennsylvania, made con-
 formably to an Act of Assembly approved the 16th day of
 February, 1833, I have hereunto set my Hand and caused
 the Seal of said Department to be affixed at Harrisburg, this
 sixth day of April 1897

James W. Latta
 Secretary of Internal Affairs